

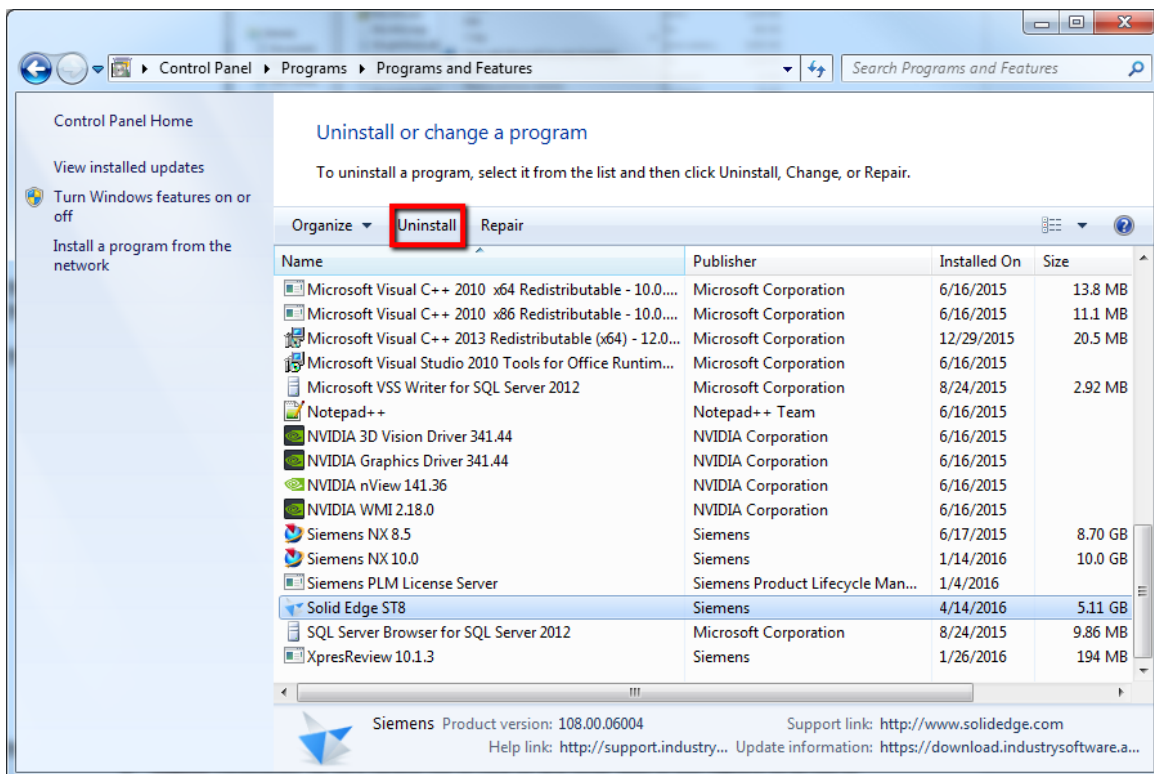
Date: 5/5/2016

Version: ST8

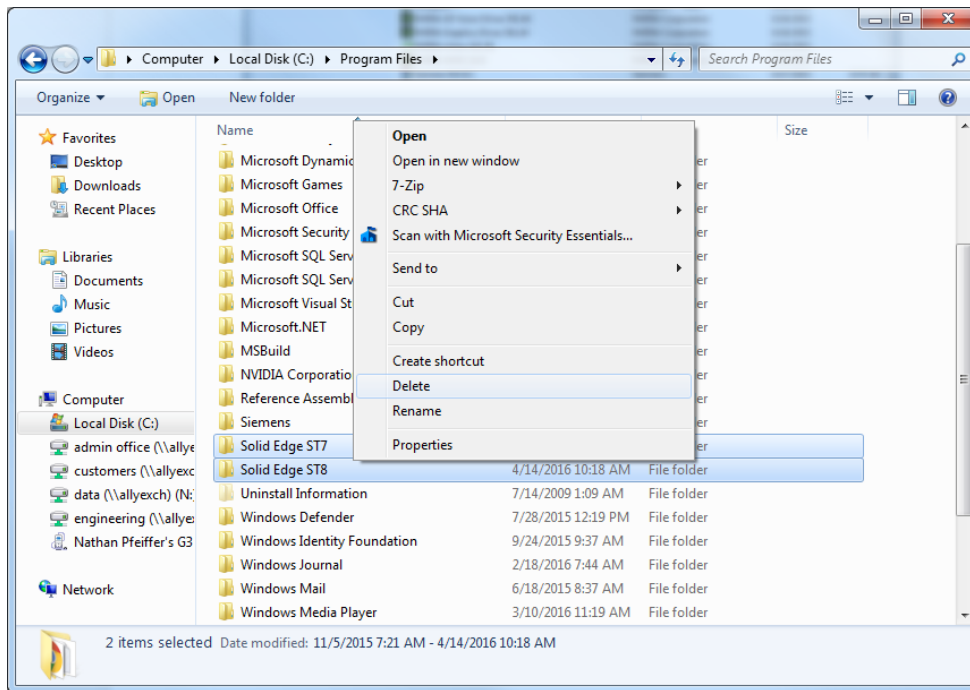
Revision: 5

How To Uninstall and Reinstall Solid Edge

- Step 1:** Make sure to back up custom files. This information on what to back up can be found in the How To: Custom Files to Back Up Before Uninstalling Solid Edge.
- Step 2:** For Version ST5 or older go to C:\Program Files\Solid Edge ST5\Program and find SELicense.dat
For Version ST6 or newer go to C:\Program Files\Solid Edge ST6\Preferences and find SELicense.dat
- Step 3:** Copy the license file to your desktop or another secure location so it can be put back in the above directory after the reinstall.
- Step 4:** Go to Windows Start Button -> Control Panel -> Add Remove Programs. Uninstall Solid Edge

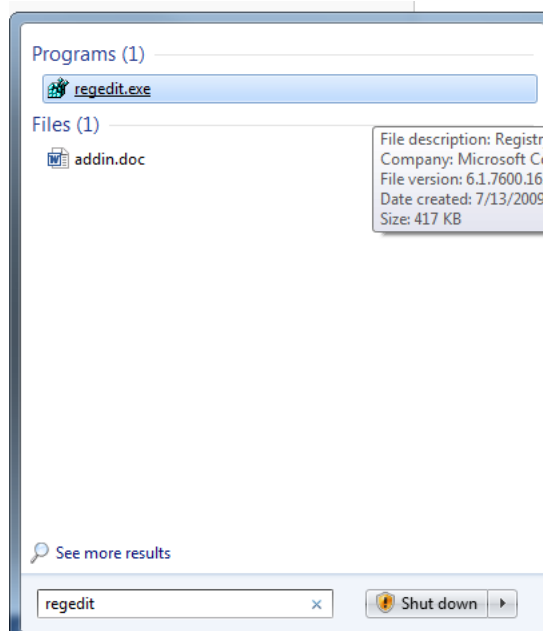


Step 5: After Solid Edge has uninstalled go to C:\Program Files Directory and delete any Solid Edge folders left behind.



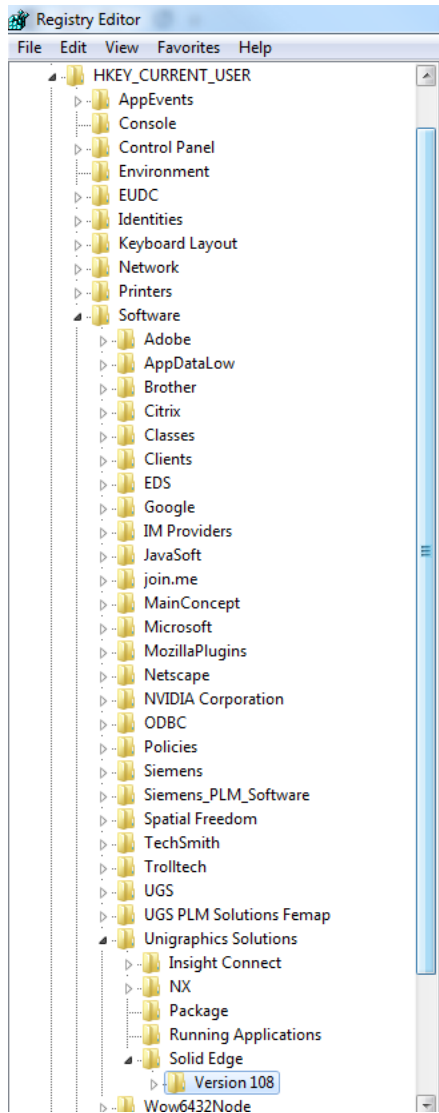
Step 6: ** In the next few steps you will edit the registry of your computer and delete SE. Follow the instructions *exactly* as they are shown, failure to do so could result in causing major issues on your computer. **

Step 7: Go to Windows Start Button, type "regedit" and enter into the registry.



Step 8: Go to HKEY_CURRENT_USER -> Software -> Unigraphics -> Solid Edge.

Step 9: Click on the Solid Edge Key, then right click delete.



Step 10: After deleting the SE registry, you can begin to reload Solid Edge.

Step 11: After SE has been reinstalled, copy and paste the license file back into the directory you got it from in the above steps.